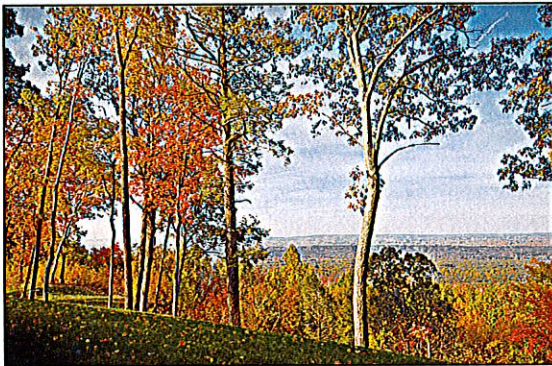
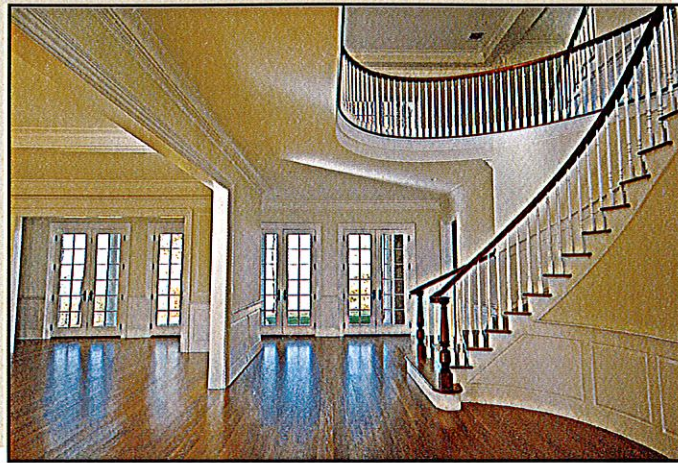
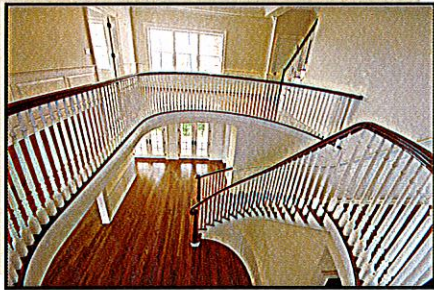
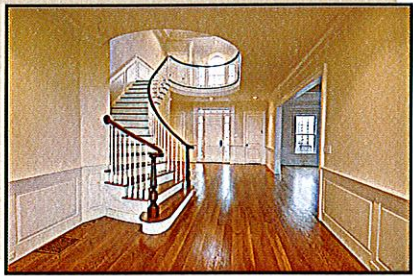


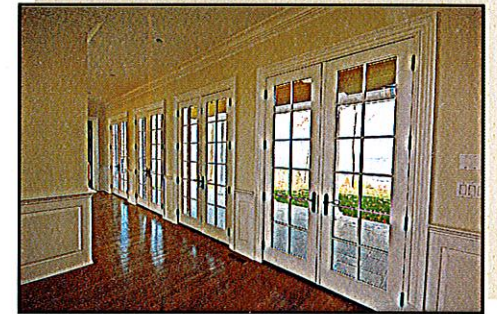
The Ridge House *Avon, Connecticut*



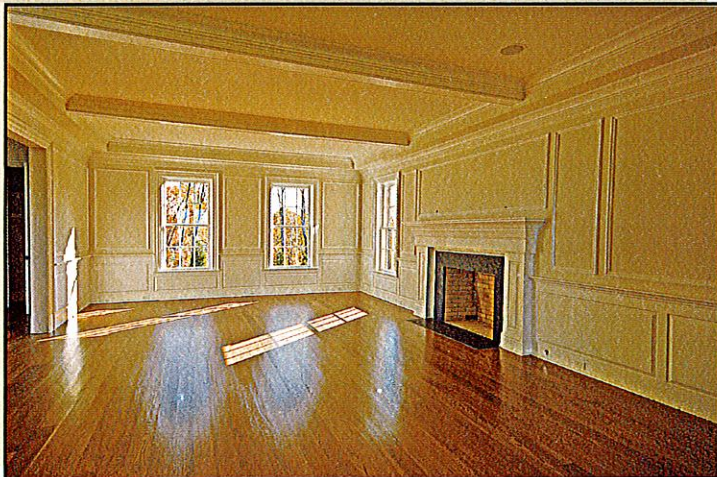
2008 Hobie Award Winner!



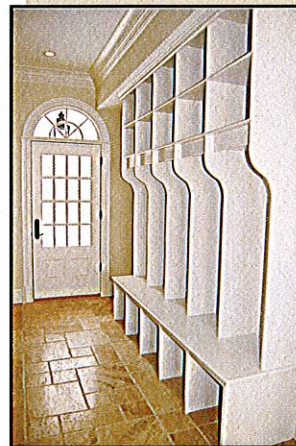
*"Kristan" built Circular Staircase with
Mahogany Railing*



*Gallery with Views and
French Doors to
Covered Porch*



Formal Living Room



Mud Room

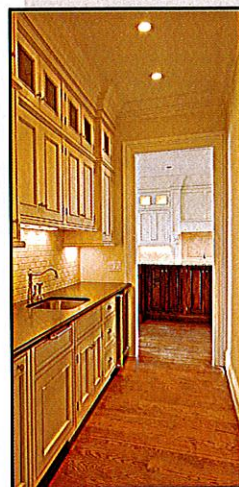
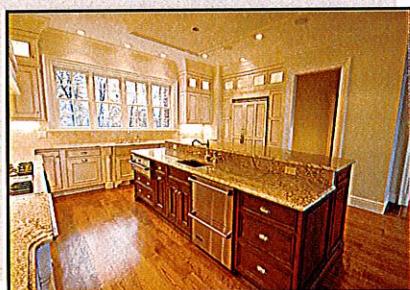


Formal Dining Room

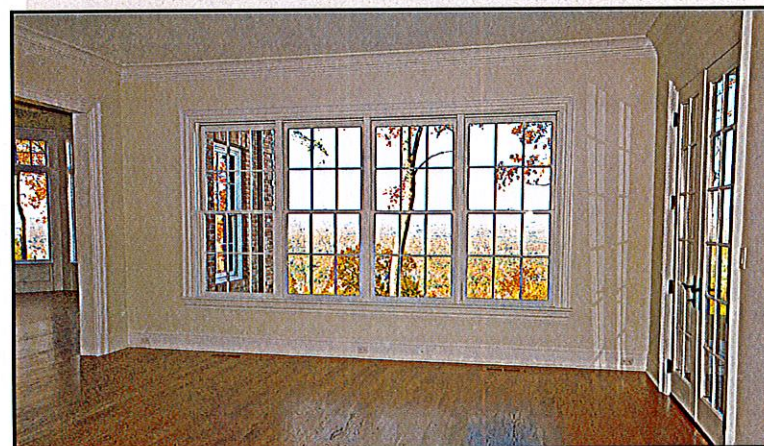
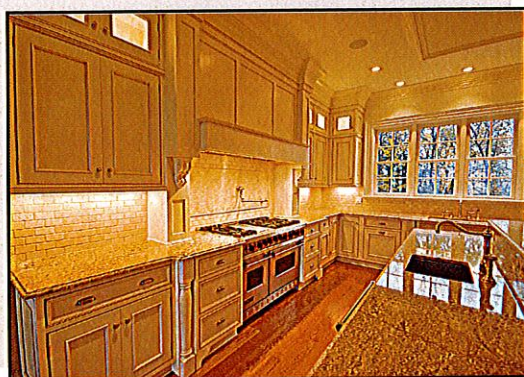


Kitchen

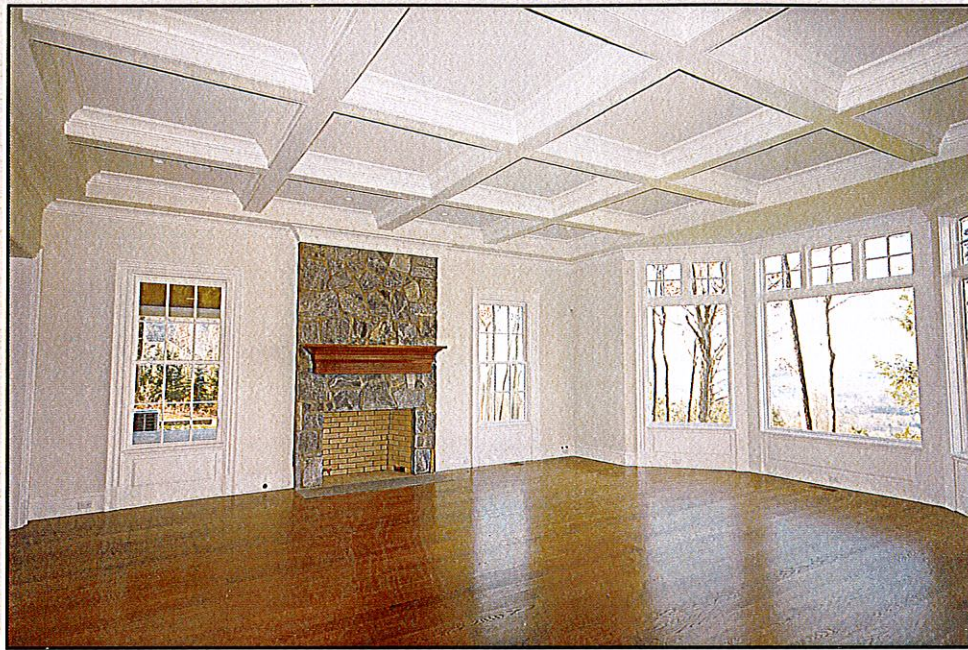
- All custom built glazed beaded inset cabinetry by Greenfield Cabinetry with exposed hinges and "Blue Motion" drawers and doors.
- Appliances include 48" Viking Range with dual fuel and warming drawer, built in 48" Viking Refrigerator with full overlay panel, Rohl faucets and pot filler, Viking 24" under counter double drawer Refrigerator, Bosch Dishwasher
- Butler's Pantry with custom cabinetry, Viking 24" stainless Wine Cooler and second Dishwasher
- Breakfast area with French Doors and Fabulous Views



Butler's Pantry



Breakfast Area with Views and French Doors to Patio



Family Room
Fabulous stone fireplace, coffered ceiling, recessed lighting and beautiful views



Library
Fully custom American Walnut paneling and cabinetry with inset doors, black slate fireplace, coffered ceiling and 7" American Walnut flooring and breathtaking views





*Master Suite with Fireplace and
View to Sitting Room*

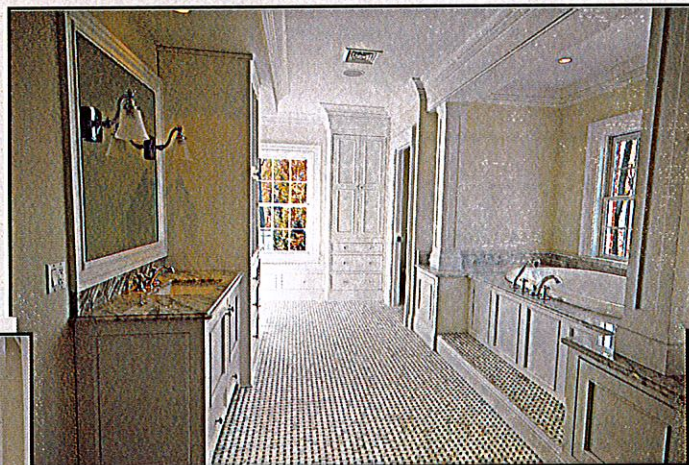


Master Suite View from Sitting Room

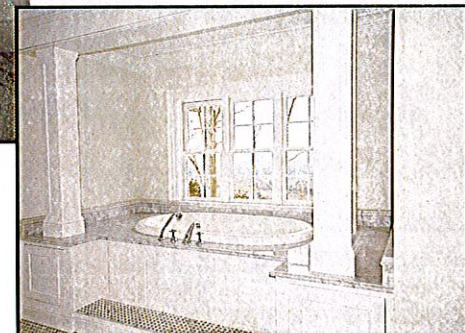
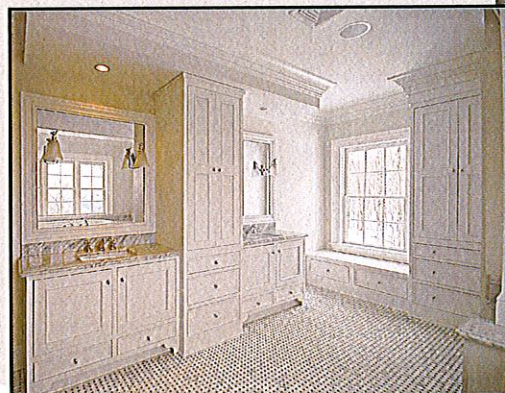


*2nd & 3rd Floor Staircases with
Mahogany Railing*

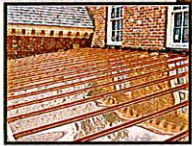
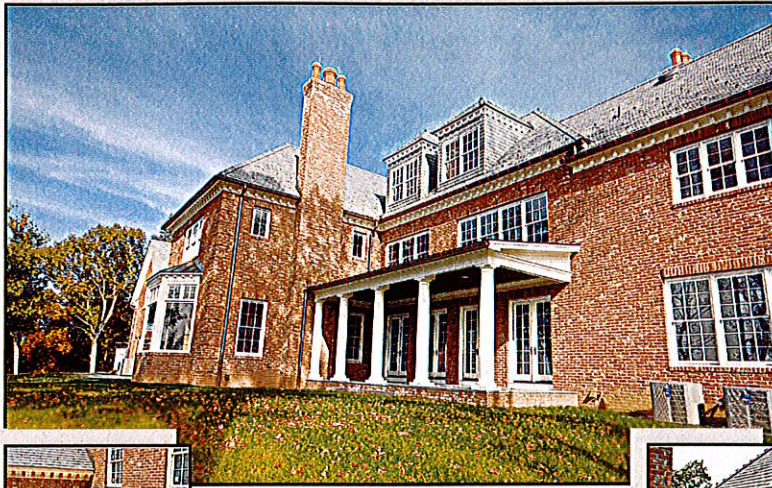
His & Hers Sinks



*Master Bath with
Steam Shower &
Carrera Marble Tile*



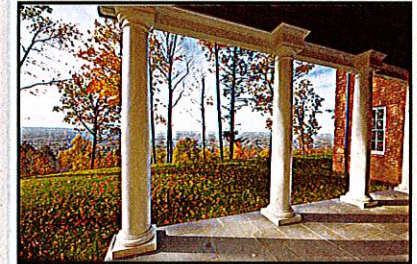
Cast Iron Whirlpool Tub



Features

- Poirier Homes LLC Built
- "Smart Home" Automation System (\$30,000 Allowance)
- Gemini" Security System
- Six Zone Hydro Air-First Company & American Standard
- Energy Star Approved by CL&P
- Beam Central Vacuum System with Power Outlets
- 2 Covered Porches & Blue Stone Patio
- 4 Car Garage with Custom Wood & Insulated Carriage House Doors with Ogee Edge
- Circular Drive with Cobble Inlaid
- True Slate Roof 14" Slates
- 5" Half Round Copper Gutters
- All "Used" Brick Exterior
- Established Town Maintained Cul-de-sac with Fire Hydrant by Pond

Sweeping views from nearly every room of this truly exceptional home. Designed by Rob Fish and exquisitely crafted by Poirier Homes LLC this house earned the 2008 Hobt Award! Set on 3.4 acres atop Avon Mountain offering 9,300 square feet, 6 bedrooms, 6 full and 2 half baths with every upgrade a discerning homeowner desires including all cast iron tubs, steam shower with body sprays and rainmaker in master bathroom, "Rohl" faucets throughout, #1 select 5" white oak flooring, copper lightning protection system, solid six panel "True Style" doors 8' on 1st floor and 7' on 2nd floor, 10' ceilings on 1st & 2nd floors, 3rd floor bonus / au-pair suite, back banded interior millwork, 5 fireplaces with custom surrounds and mantels.



Ellen Seifts

Avon's #1 Agent

(860) 676-3909

eseifts@prudentialct.com



Prudential
Connecticut Realty