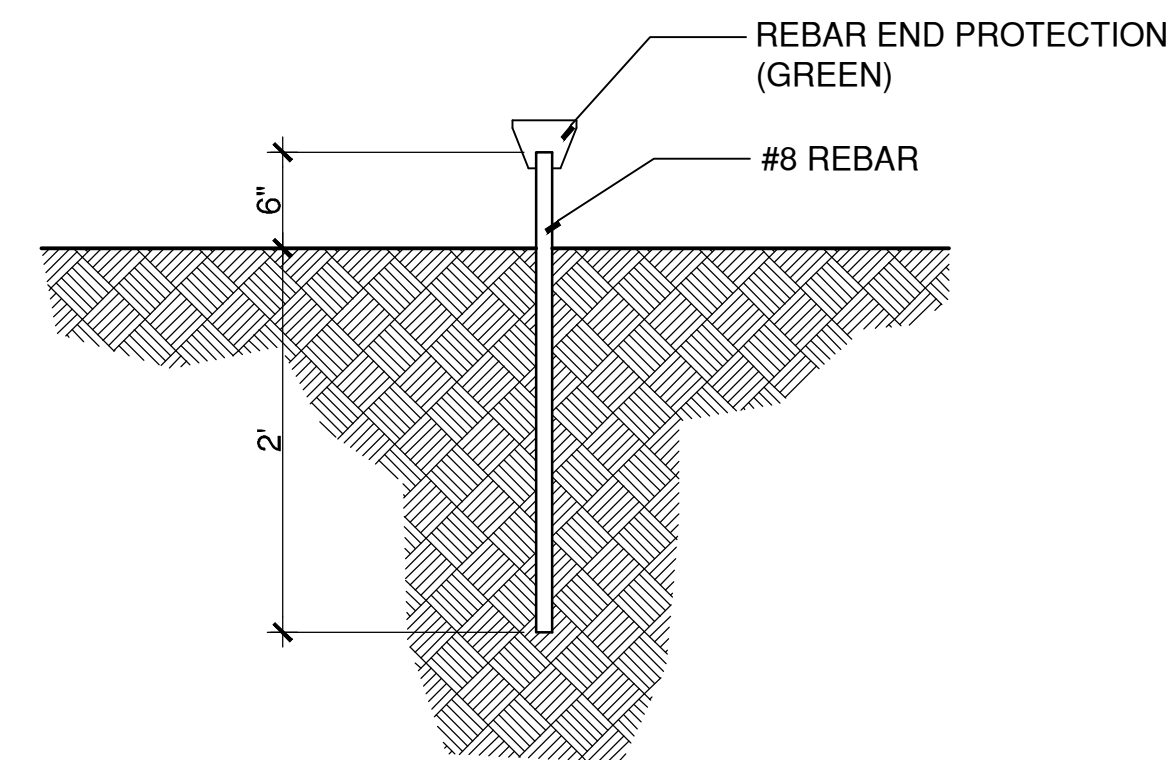
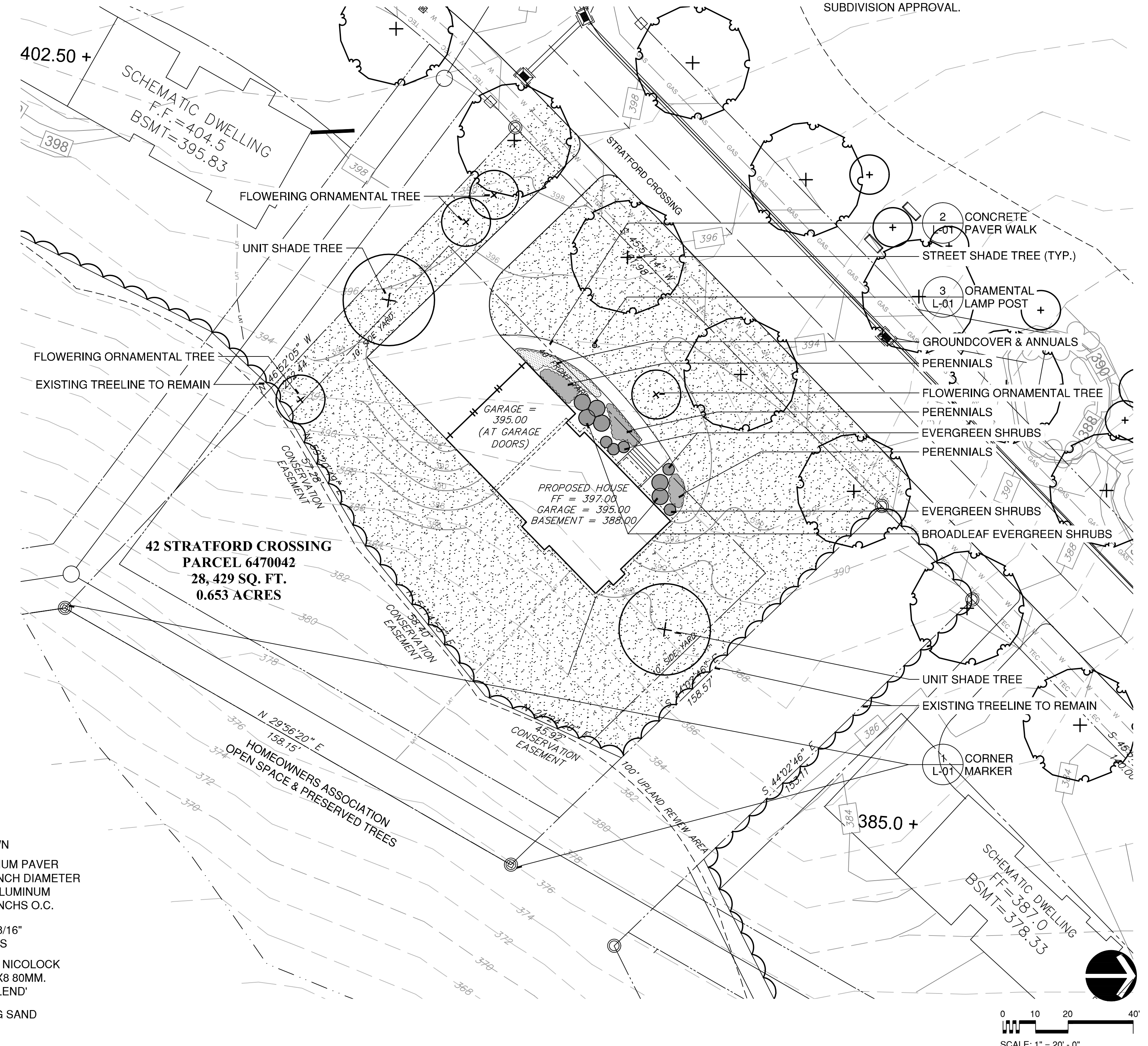


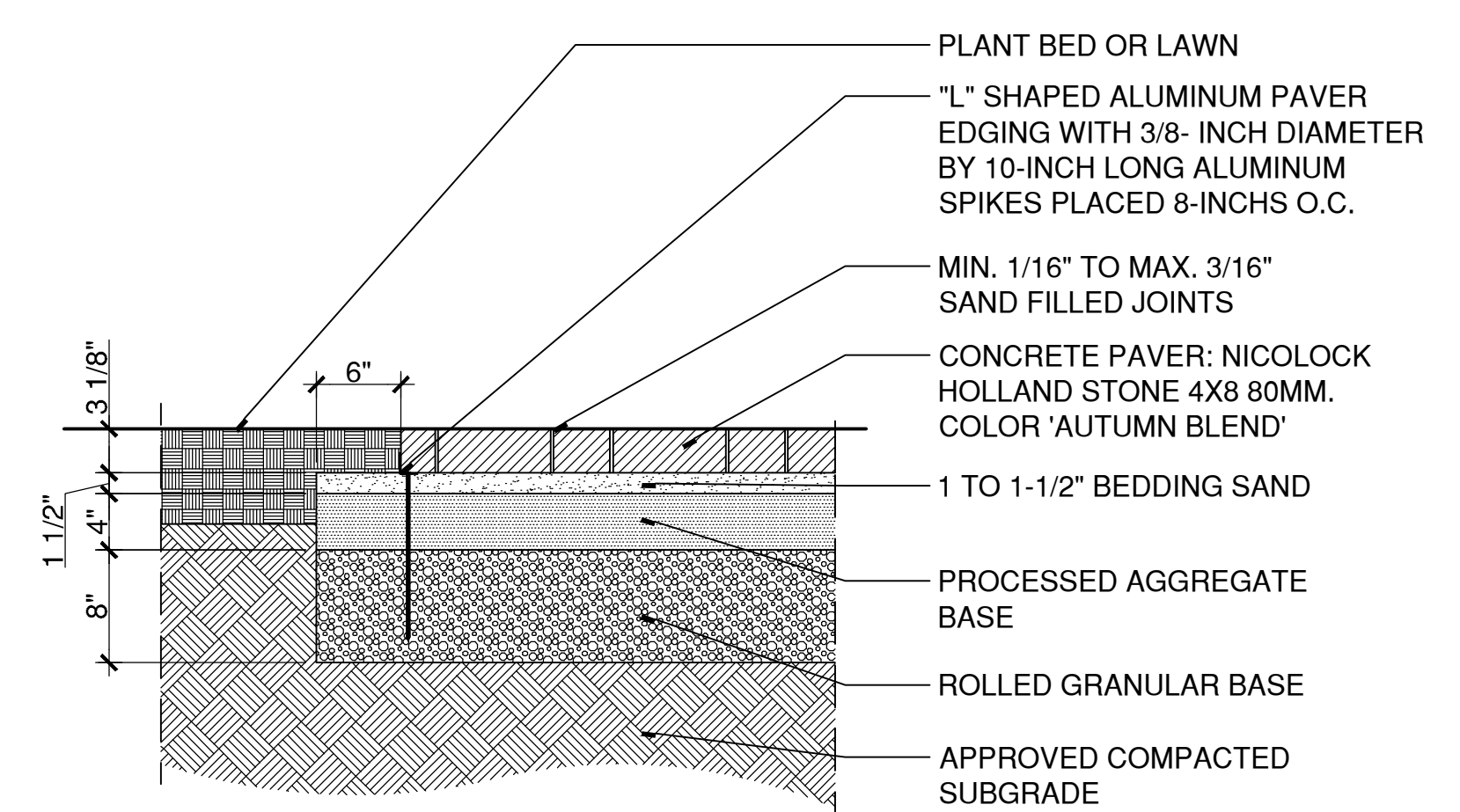
PLANT SCHEDULE				
CATEGORY	BOTANICAL NAME	COMMON NAME	SIZE	COMMENTS
STREET SHADE TREE	PLATANUS X ACERIFOLIA 'BLOODGOOD'	BLOODGOOD LONDON PLANETREE	3 - 3 1/2" CAL.	B&B
	ACER RUBRUM 'RED SUNSET'	RED SUNSET RED MAPLE	3 - 3 1/2" CAL.	B&B
	ACER SACCHARUM	SUGAR MAPLE	3 - 3 1/2" CAL.	B&B
	ZELKOVA SERRATA	JAPANESE ZELKOVA	3 - 3 1/2" CAL.	B&B
UNIT SHADE TREE	FAGUS GRANDIFOLIA	AMERICAN BEECH	2 1/2" - 3" CAL.	B&B
	QUERCUS RUBRA	RED OAK	2 1/2" - 3" CAL.	B&B
FLOWERING ORNAMENTAL TREE	AMELANCHIER CANADENSIS	SHADBLOW SERVICEBERRY	7 - 8' HEIGHT	B&B
	CORNUS FLORIDA	FLOWERING DOGWOOD	2 - 2 1/2" CAL.	B&B
	PRUNUS CERASIFERA 'THUNDERCLOUD'	THUNDERCLOUD FLOWERING PLUM	2 - 2 1/2" CAL.	B&B
UNDERSTORY EVERGREEN TREE	ILEX OPACA	AMERICAN HOLLY	6-7' HT	B&B
	PICEA ABIES	NORWAY SPRUCE	6-7' HT	B&B
	TSUGA CANADENSIS	CANADIAN HEMLOCK	6-7' HT	B&B
BROADLEAF EVERGREEN SHRUBS	BUXUS MICROPHYLLA 'WINTER GEM'	WINTER GEM LITTLELEAF BOXWOOD	N 75d0' E	#3 CONTAINER MINIMUM
	ILEX CRENATA 'HOOGENDORN'	HOOGENDORN JAPANESE HOLLY	18 - 24"	#3 CONTAINER MINIMUM
	ILEX CRENATA 'STEEDS'	STEEDS JAPANESE HOLLY	30 - 36"	#5 CONTAINER MINIMUM
	PIERIS X 'BROUWER'S BEAUTY'	BROUWER'S BEAUTY PIERIS	24 - 30"	#5 CONTAINER MINIMUM
	RHODODENDRON 'PJM'	PJM RHODODENDRON	24 - 30"	#5 CONTAINER MINIMUM
	RHODODENDRON CATAWBIENSE 'BOURSAULT'	BOURSAULT RHODODENDRON	24 - 30"	#5 CONTAINER MINIMUM
	RHODODENDRON X 'DELAWARE VALLEY WHITE'	DELAWARE VALLEY WHITE AZALEA	18 - 24"	#3 CONTAINER MINIMUM
EVERGREEN SHRUBS	PINUS MUGO 'MOPS'	MOPS MUGO PINE	12 - 15"	#3 CONTAINER MINIMUM
	TAXUS BACCATA 'REPANDENS'	REPANDENS COMMON YEWE	24 - 30"	#3 CONTAINER MIN. OR B&B
PERENNIALS	HEMEROCALLIS 'STELLA D' ORO'	STELLA D' ORO DAYLILY	#1 CONTAINER	18" O.C.
	COREOPSIS VERTICILLATA 'ZAGREB'	ZAGREB THREADLEAF COREOPSIS	#1 CONTAINER	18" O.C.
GROUND COVER	JUNIPERUS HORIZONTALIS 'WILTONI'	BLUE RUG JUNIPER	#2 CONTAINER	24" O.C.
	MICROBIOTA DECUSSATA	RUSSIAN ARBORVITAE	#2 CONTAINER	18" O.C.
	LIRIOPE SPICATA	LILYTURF	#1 CONTAINER	10" O.C.
	VINCA MINOR	PERIWINKLE	4" POT	6" O.C.

NOTES:

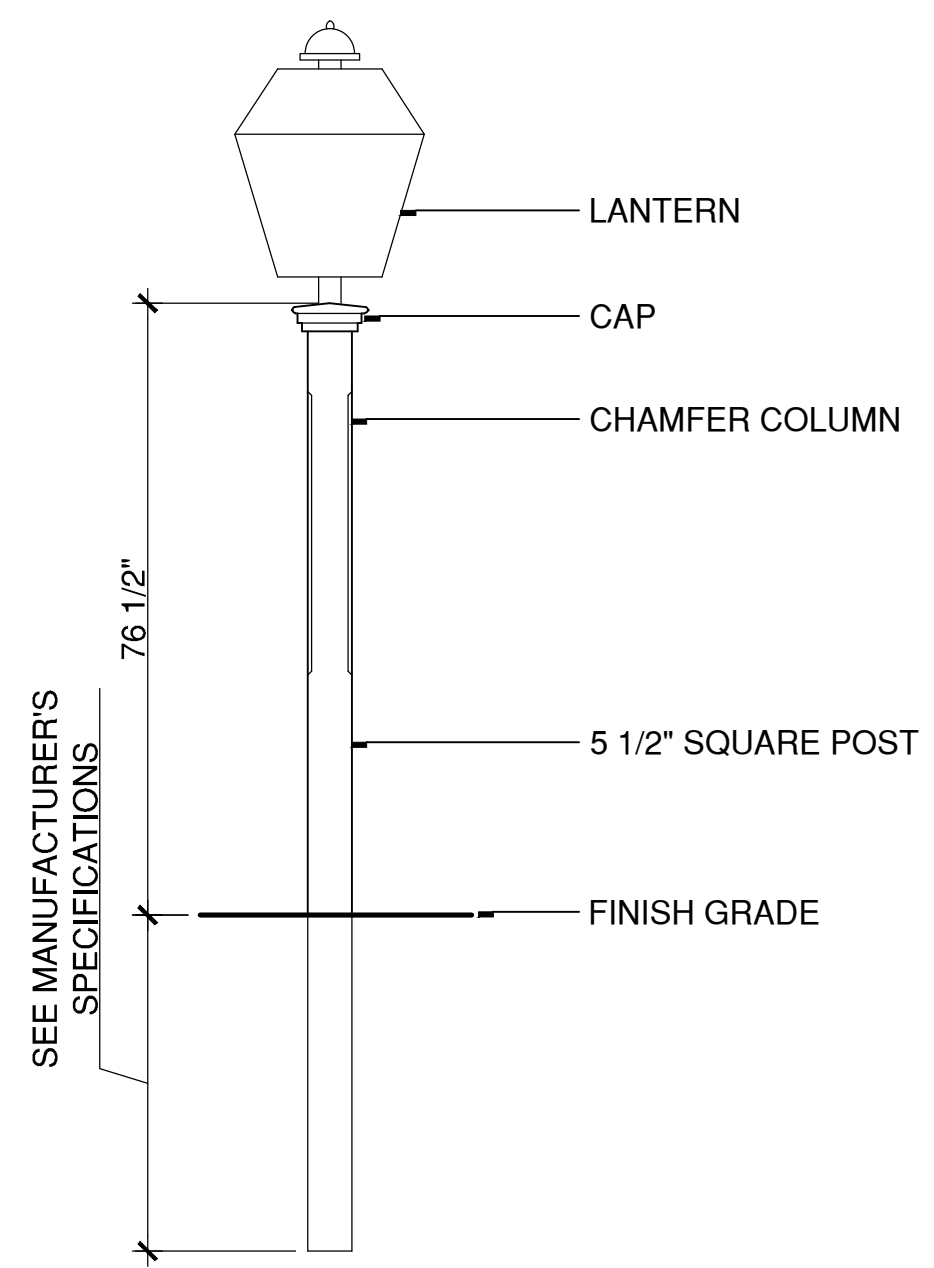
- SUBSTITUTIONS MAY BE MADE AT THE TIME OF PLANTING BASED ON NURSERY STOCK AVAILABILITY WITH APPROVAL OF LANDSCAPE ARCHITECT.
- PLANT LOCATIONS, QUANTITIES, TYPES OR SPECIES MAY BE ADJUSTED IN THE FIELD WITH TOWN STAFF REVIEW TO PRESERVE EXISTING TREES IN THE GENERAL LOCATION OF PROPOSED PLANTINGS.
- THIS PLAN CERTIFIES COMPLIANCE OF A LANDSCAPE PLAN PREPARED BY A LICENSED LANDSCAPE ARCHITECT FOR A BUILDING PERMIT APPLICATION AS REQUIRED BY CONDITION #8 OF THE AVON PLANNING AND ZONING COMMISSION SUBDIVISION APPROVAL.



**1 CORNER MARKER**  
SCALE: 1"=1'  
corner marker.dwg



**2 CONCRETE PAVER WALK**  
SCALE: 1"=1'  
321413-A.DWG



**3 ORNAMENTAL LAMP POST**  
N.T.S.  
W:\2013026\1predes\details\LampPost.dwg

REVISION	LANDSCAPE PLAN	SCALE
	FOR POIRIER HOMES LLC	1"=20'
	42 STRATFORD CROSSING	DATE
	AVON, CONNECTICUT	08/27/14
		COMM. NO.
		9730-17
		DRAWING NO.
		L-01
DRAWN BY WRW	LANDSCAPE ARCHITECT <b>Richter &amp; Cegan Inc.</b>	88 CANAL COURT P.O. BOX 567 AVON, CT 06001 PHONE: 860-678-0669
CHECKED BY WCR	THIS DRAWING IS NOT TO BE USED FOR CONSTRUCTION EXCEPT UNDER THE SUPERVISION OF THE ENGINEER	

C:\Documents and Settings\WCR\My Documents\Drawings\Landscapes\12.25.25 PM EDT