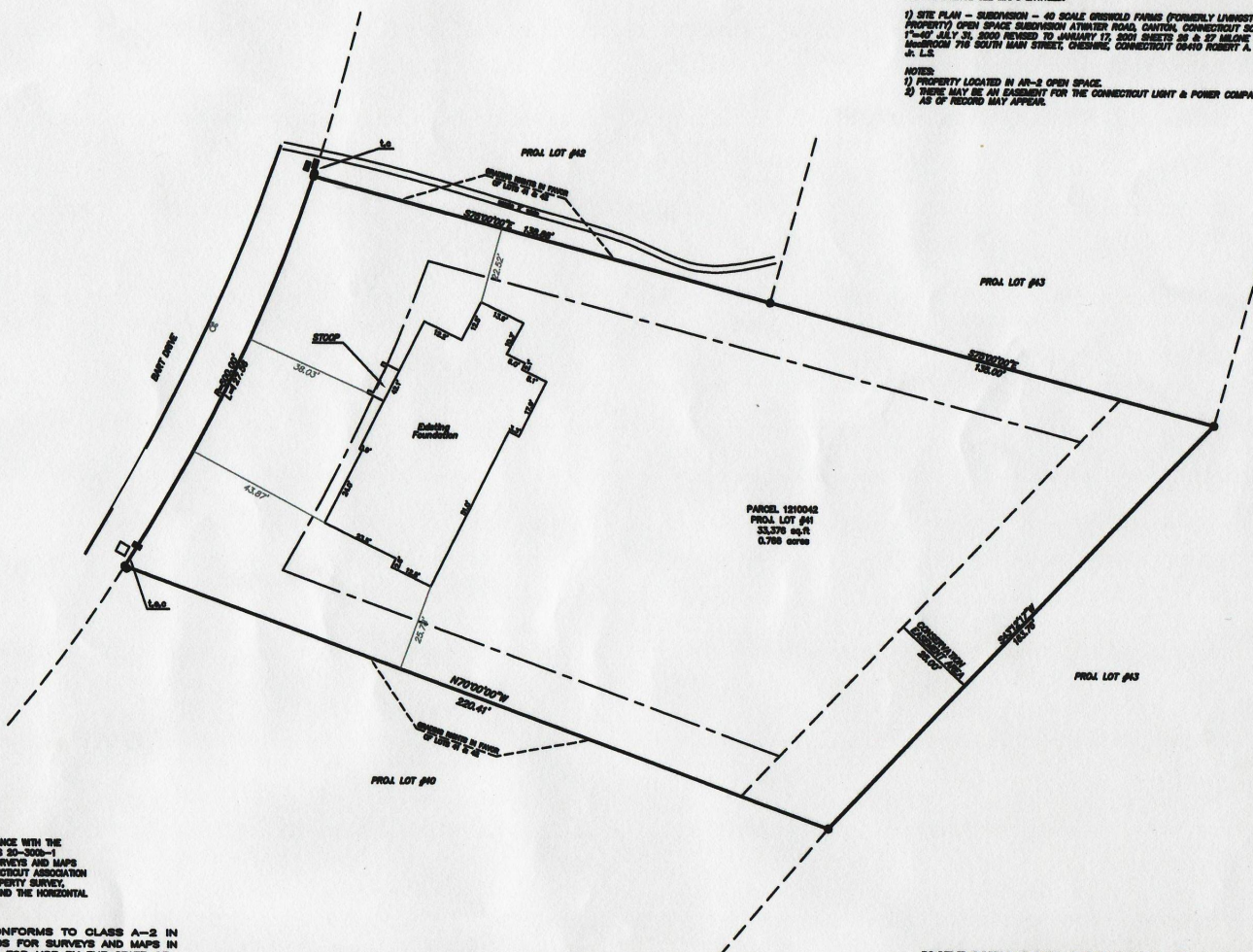


FOR REFERENCE SEE MAPS ENTITLED:

- 1) SITE PLAN - SUBDIVISION - 40 SCALE GREENWOLD FARMS (FORMERLY LYNNSTON et al PROPERTY) OPEN SPACE SUBDIVISION ATWATER ROAD, GANTON, CONNECTICUT SCALE 1"=40' JULY 3, 2000 REVISED TO JANUARY 17, 2001 SHEETS 28 & 27 MILONE & ASSOCIATES 710 SOUTH MAIN STREET, CHESTER, CONNECTICUT 06410 ROBERT A. JACKSON, J. L.S.

NOTES:

- 1) PROPERTY LOCATED IN AN "A" OPEN SPACE.
- 2) THERE MAY BE AN AGREEMENT FOR THE CONNECTICUT LIGHT & POWER COMPANY AS OF RECORD MAY APPEAR.



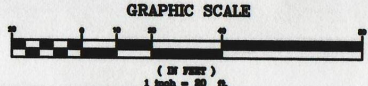
PARCEL 1210042
 PRO LOT #41
 33,378 sq.ft
 0.768 acres

NOTES AND DECLARATIONS
 THIS SURVEY AND MAP HAS BEEN PREPARED IN ACCORDANCE WITH THE REGULATIONS OF CONNECTICUT STATE AGENCIES, SECTIONS 20-300b-1 THROUGH 20-300b-20, THE MINIMUM STANDARDS FOR SURVEYS AND MAPS IN THE STATE OF CONNECTICUT ENDORSED BY THE CONNECTICUT ASSOCIATION OF LAND SURVEYORS, INC. THE TYPE OF SURVEY IS PROPERTY SURVEY. THE BOUNDARY DETERMINATION CATEGORY IS RESURVEY AND THE HORIZONTAL ACCURACY CONFORMS TO A-2.

THIS IMPROVEMENT LOCATION MAP CONFORMS TO CLASS A-2 IN ACCORDANCE WITH THE MINIMUM STANDARDS FOR SURVEYS AND MAPS IN THE STATE OF CONNECTICUT AS ADOPTED FOR USE BY THE STATE OF CONNECTICUT ON SEPTEMBER 26, 1998.

TO MY KNOWLEDGE AND BELIEF THIS MAP IS SUBSTANTIALLY CORRECT AS NOTED HEREON.

FRANCIS A. RICHARD, L.S. #11351 SURVEYOR



IMPROVEMENT LOCATION SURVEY
 PREPARED FOR
Poirier Homes LLC
 41 Bart Drive
 Canton, Connecticut
 Scale: 1"=20' Date: August 2007
HODGE SURVEYING ASSOCIATES, P.C.
 JOB NO. 104-10 DRW

C:\land Projects\104-10\dwg\LOT41.dwg, 9/17/2007 2:21:50 PM