



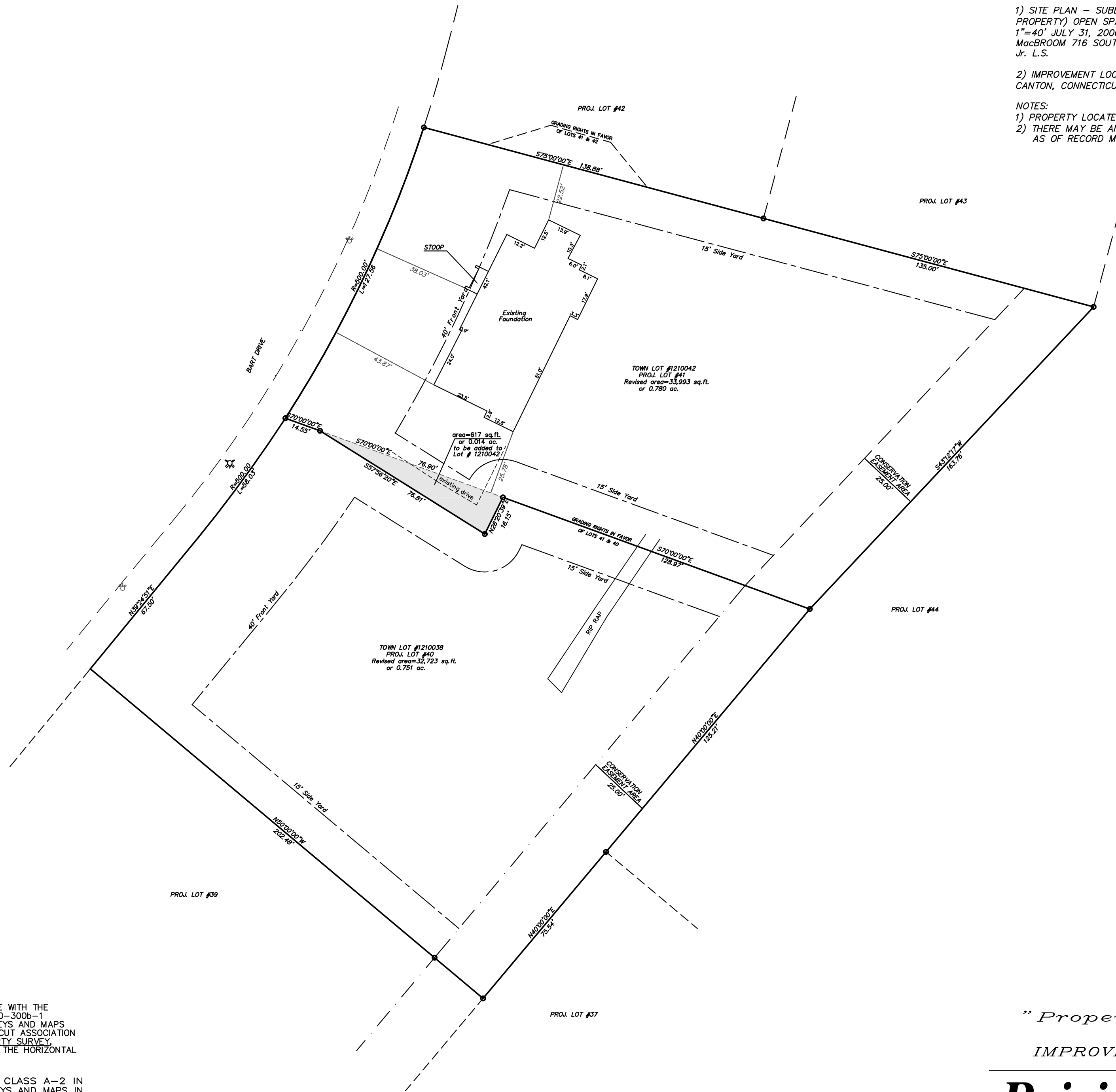
FOR REFERENCE SEE MAPS ENTITLED:

1) SITE PLAN - SUBDIVISION - 40 SCALE GRISWOLD FARMS (FORMERLY LIVINGSTON et al PROPERTY) OPEN SPACE SUBDIVISION AT WATER ROAD, CANTON, CONNECTICUT SCALE 1"=40' JULY 31, 2000 REVISED TO JANUARY 17, 2001 SHEETS 26 & 27 MILONE & MacBROOM 716 SOUTH MAIN STREET, CHESHIRE, CONNECTICUT 06410 ROBERT A. JACKSON, Jr. L.S.

2) IMPROVEMENT LOCATION SURVEY PREPARED FOR POIRIER HOMES LLC 41 BART DRIVE CANTON, CONNECTICUT - SCALE 1"=20' AUGUST 2007 HODGE SURVEYING ASSOCIATES, P.C.

NOTES:

- 1) PROPERTY LOCATED IN AR-2 OPEN SPACE.
- 2) THERE MAY BE AN EASEMENT FOR THE CONNECTICUT LIGHT & POWER COMPANY AS OF RECORD MAY APPEAR.

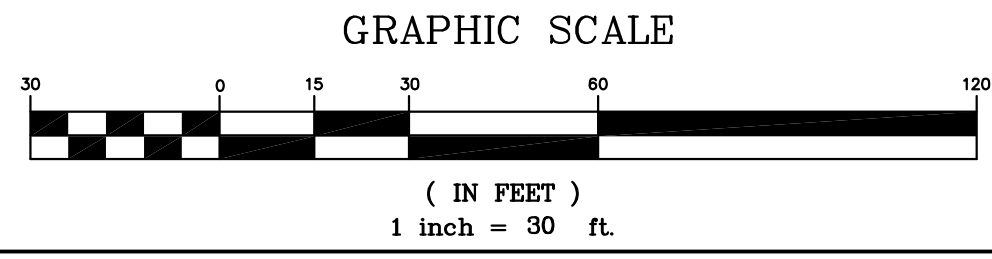


NOTES AND DECLARATIONS
 THIS SURVEY AND MAP HAS BEEN PREPARED IN ACCORDANCE WITH THE REGULATIONS OF CONNECTICUT STATE AGENCIES, SECTIONS 20-300b-1 THROUGH 20-300b-20, THE MINIMUM STANDARDS FOR SURVEYS AND MAPS IN THE STATE OF CONNECTICUT ENDORSED BY THE CONNECTICUT ASSOCIATION OF LAND SURVEYORS, INC. THE TYPE OF SURVEY IS PROPERTY SURVEY. THE BOUNDARY DETERMINATION CATEGORY IS RESURVEY AND THE HORIZONTAL ACCURACY CONFORMS TO A-2.

THIS IMPROVEMENT LOCATION MAP CONFORMS TO CLASS A-2 IN ACCORDANCE WITH THE MINIMUM STANDARDS FOR SURVEYS AND MAPS IN THE STATE OF CONNECTICUT AS ADOPTED FOR USE BY THE STATE OF CONNECTICUT ON SEPTEMBER 26, 1996.

TO MY KNOWLEDGE AND BELIEF THIS MAP IS SUBSTANTIALLY CORRECT AS NOTED HEREON.

_____, SURVEYOR
 FRANCIS A. RICHARD, L.S. #11351



"Property Line Modification"
 IMPROVEMENT LOCATION SURVEY
 PREPARED FOR
Poirier Homes LLC
 38 & 42 Bart Drive
 Canton, Connecticut
 Scale: 1"=30' Date: September 29, 2009
 HODGE SURVEYING ASSOCIATES, P.C.

S:\Land Projects\2004\104-10\dwg\LOT140-41_PL-MON-2009.dwg, 2/8/2010 8:57:31 AM